

RECYCLING TOOLKIT

FOR SUMMIT COUNTY BUSINESSES

THIS TOOLKIT OFFERS GUIDANCE TO MAKE IT EASY FOR YOUR BUSINESS TO RECYCLE IN SUMMIT COUNTY.

TABLE OF CONTENTS:

Business Recycling + Composting Guidelines	2-3
Starting a Recycling Program.....	4
Recycling Best Practices	5
Resource Wise Program.....	5
Marketing Materials.....	6
Recycling Flyer.....	7



"Hi, my name is Rocky the Recycling Robot. I am here to help you recycle right."

I am HC3's new online app that helps you figure out what's recyclable in Summit County.



HIGH COUNTRY
CONSERVATION CENTER

RECYCLE RIGHT #BeLOCAL

HIGHCOUNTRYCONSERVATION.ORG
(970) 668-5703



BUSINESS RECYCLING

GUIDELINES

SINGLE-STREAM RECYCLING (excluding glass)

- » Single-stream recycling allows customers to put most of their recyclables into one bin for collection.
- » In Summit County, glass must be separated out.
- » Single-stream recyclables are picked up by your Summit County waste collection provider.



TAKE ACTION

- » See **page 7** for single-stream flyer of accepted materials.
- » **Order labels** for your business. See **page 6**.



GLASS RECYCLING

- » Separating glass from single-stream recycling is mandatory.
- » Keeping glass out increases diversion rates, keeps single-stream bales clean, and prevents injury of recycling workers.
- » **Glass is 100% recyclable bottle to bottle.**



TAKE ACTION

- » Glass collection is available from **Clear Intentions**. Call **303-993-8221** to learn more.
- » Ask your waste service provider if they offer glass collection service. For contact info see **page 4**.
- » Some small businesses take their glass directly to local drop-off recycling centers. See **page 3** for info.
- » **Order labels** for your business. See **page 6**.

ELECTRONICS & HOUSEHOLD HAZARDOUS WASTE (HHW)

It is against Colorado state law to place electronic and hazardous waste in the landfill.

TAKE ACTION

- » **View** or **download** chart for common HHW items. See **page 6**.
- » Drop off at the **Summit Country Resource Allocation Park (SCRAP)** for no fee at **639 Landfill Rd., Dillon, CO 80435** (7am - 4pm)
- » Businesses with large commercial loads must call **SCRAP** in advance at **970-468-9263**.



HIGH COUNTRY
CONSERVATION CENTER

RECYCLE RIGHT #BeLOCAL

HIGHCOUNTRYCONSERVATION.ORG
(970) 668-5703



BUSINESS COMPOSTING & DROP-OFF CENTERS

GUIDELINES

FOOD SCRAP & COMPOST PROGRAMS

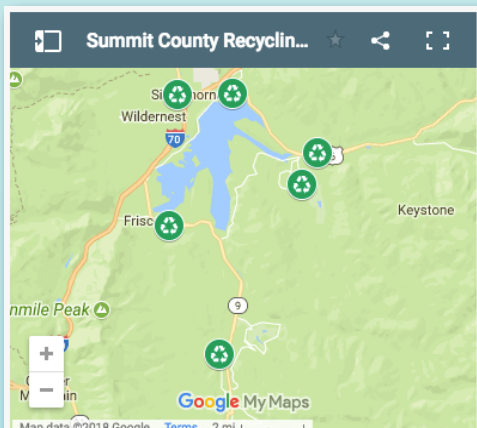
43% of the food America produces ends up in a landfill. Help us reduce food waste!

- » Composting (recycling your food scraps) curbs methane emissions, a greenhouse gas produced by food decomposing in landfills.
- » Food scrap recycling creates a close-looped system where uneaten food is transformed into a valuable soil amendment - High Country Compost - at the SCRAP commercial composting operation.



TAKE ACTION

- » Call your waste provider to see if they offer food scraps services.
- » Call HC3 at **970-668-5703** to see if you qualify for our **Small Business Food Scrap** program. As a Summit County resident this program is FREE to join and offers access to the food scrap bins at the Breckenridge & Frisco Recycling Centers.



RECYCLING DROP-OFF CENTERS

Breckenridge Recycling Center | Open 24 hours a day
284 Coyne Valley Rd, Breckenridge, CO 80424

Frisco Recycling Center | Open 24 hours a day
221 Peak One Blvd., Frisco, CO 80443

Dillon Recycling Center | Open 24 hours a day
275 Lake Dillon Dr., Dillon, CO 80435

Waste Management Silverthorne | 8am- 5pm Mon - Fri; 7am - Noon
Saturday | 970-468-2475 **(GLASS ONLY)**
314 3rd St., Silverthorne, CO 80498

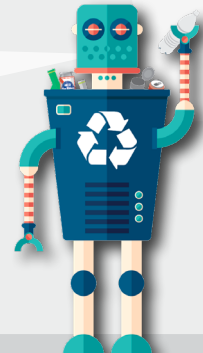
**These local centers require sorting materials into different bins. Visit the [High County Conservation Center's website](#) for a list of accepted materials.*

SUMMIT COUNTY RESOURCE ALLOCATION PARK (SCRAP)

Recycling Facility | Open Mon - Sat, 7am - 4pm

Landfill | Open Mon - Sat, 6am - 6pm
639 Landfill Rd., Dillon, CO 80435

"When in doubt,
give HC3 a shout!
Call 970-668-
5703"



HIGH COUNTRY
CONSERVATION CENTER

RECYCLE RIGHT #BELOCAL

HIGHCOUNTRYCONSERVATION.ORG
(970) 668-5703



STARTING A RECYCLING PROGRAM

LOCAL RESOURCES

3 EASY STEPS TO START OR EXPAND YOUR RECYCLING PROGRAM

1

CONTACT YOUR LOCAL SERVICE OR COLLECTION PROVIDER

Timberline Disposal & Recycling
970-368-6446
TDLinfo@TimberlineDisposal.com
www.timberlinedisposal.com



Waste Management | 866-305-7433
Jeanne Severson - Summit County Territory Manager
970-904-6212
Jseverso@wm.com
www.wm.com



2

CALL HIGH COUNTRY CONSERVATION CENTER AT 970-668-5703
OR VISIT WWW.HIGHCOUNTRYCONSERVATION.ORG FOR GUIDANCE.

3

FOLLOW RECYCLING BEST PRACTICES ON PAGE 5.

THE FAMILY THAT
RECYCLES TOGETHER
STAYS TOGETHER



AS A #BELOCAL
FAMILY, WE SUPPORT
BUSINESSES THAT
RECYCLE RIGHT!



THREE CHEERS
FOR RECYCLING!



HIGH COUNTRY
CONSERVATION CENTER

RECYCLE RIGHT #BELOCAL

HIGHCOUNTRYCONSERVATION.ORG
(970) 668-5703



RECYCLING BEST PRACTICES

EDUCATE & BE CONSISTENT

COLORS, BINS, & PLACEMENT MATTER

- **Bag, Lid & Bin Color:** **Blue = Recycling**, **Green = Food Scraps**, **Black = Landfill**, **Orange = Glass only**.
- **Bin Placement:** For every trash can, you should have an equal or larger size recycling bin.
- **Consistent Labels:** Label every trash & recycling bin with same messaging throughout your business.

EDUCATION FOR YOUR BUSINESS: MAKE RECYCLING EASY

- Keep signage and messaging consistent.
- Align messaging with county-wide labels - quick and easy ordering on **HC3's website**.
- Include recycling and composting guidelines and best practices in employee training.

TRAINING CUSTODIAL STAFF & CLEANING CREW: EMPOWER THE RECYCLERS

- Provide this toolkit with custodial staff and cleaning crew in all trainings and repeat often.
- Make sure resources are in a language staff understands (English & Spanish labels available).
- Organize incentive programs to promote increased diversion.

**Please note, any bins or outdoor community enclosure areas where trash is stored is managed by your waste service provider. Work with your provider first on labeling those areas. All guidelines in this toolkit - including your own branded labels - should be placed internally on your property and not on waste providers' property.*

STANDARDIZED LABELS ON RECYCLING BINS ARE THE #1 WAY TO MAKE RECYCLING PROGRAMS THRIVE.

RECYCLE ACROSS AMERICA

HC3 supports cohesive national recycling and composting messaging. We encourage all businesses to adopt these specific **Recycle Across America's** standardized labels. Order HC3 branded labels or customize with your own brand. (HighCountryConservation.org/recycle)



HIGH COUNTRY
CONSERVATION CENTER

RECYCLE RIGHT #BeLocal

HIGHCOUNTRYCONSERVATION.ORG
(970) 668-5703



MARKETING MATERIALS

TO SUPPORT YOUR RECYCLING PROGRAMS

PRINT-READY FILES TO DOWNLOAD

Flyers/Signage

- Single-stream flyer
- Food scrap flyer
- Glass flyer
- HHW flyer

Bin Stickers

- Glass
- Single-stream
- Food scrap
- Landfill



JOIN THE RESOURCE WISE PROGRAM

- Protect our mountain environment while bolstering your businesses' bottom line.
- This free program offers financial incentives and coaching on recycling, energy efficiency and much more.
- Businesses work directly with HC3 to gain certification and local recognition.
- Call HC3 at **970-668-5703** to learn more.

UTILIZE ROCKY THE RECYCLING ROBOT

- Visit HC3's Recycling Robot online at highcountryconservation.org/recycle
- **Rocky the Recycling Robot** allows you to search any item and find out how to recycle or dispose of it locally.



HIGH COUNTRY
CONSERVATION CENTER

RECYCLE RIGHT #BeLocal

HIGHCOUNTRYCONSERVATION.ORG
(970) 668-5703



SINGLE STREAM RECYCLING

ALL OF THESE RECYCLABLES CAN GO INTO ONE BIN



#1-#7 PLASTIC BOTTLES
& TUBS



ALUMINUM & TIN CANS
(PLEASE RINSE)



NEWSPAPER, PAPER,
CARDBOARD & PAPERBOARD



MILK & JUICE CARTONS

THESE ITEMS CANNOT BE RECYCLED IN SINGLE STREAM RECYCLING BIN:



NO PLASTIC BAGS OR TRASH
*Do not put recyclables in
plastic bags.*



NO GLASS



NO PLASTIC PACKAGING,
WRAP OR FILM



NO PAPER CUPS
OR TO GO CONTAINERS



NO STYROFOAM



NO FOOD WASTE



SEPARATE AND TAKE GLASS TO
RECYCLING CENTER.
NO GLASS IN SINGLE STREAM RECYCLING.



HIGH COUNTRY
CONSERVATION CENTER

QUESTIONS? CALL 970.668.5703
HIGHCOUNTRYCONSERVATION.ORG